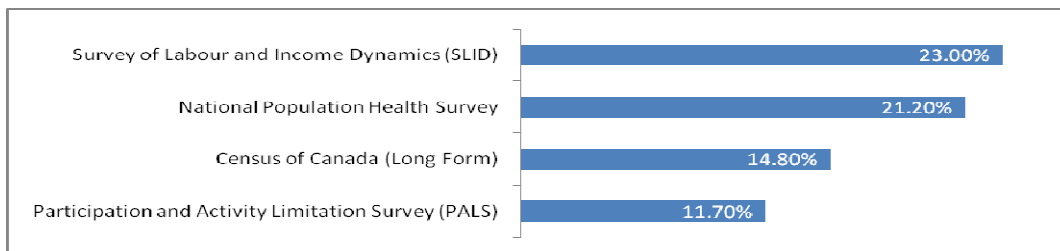




The SPCCND actively and impartially strives to improve the quality of life for all residents of Cambridge and North Dumfries through community based research, planning and action. We wish to thank the following funders for their support of this publication.



## National Disability Rates from Major Canadian Surveys, Ages 16-64, 2006



Sources: Furie, Adele., 2010, *Towards a better understanding of the dynamics of disability and its impact on employment*, Canadian Working Group on HIV and Rehabilitation; Statistics Canada, 2006 Census

Numbering around 650 million people, or approximately 10% of the world's population, people with disabilities have been referred to as the world's largest minority. With anticipated population growth, medical advances and the ageing process, this figure is expected to increase in the future (United Nations, 2006, *Some Facts About Persons with Disabilities*).

This paper presents relevant information about the situation of people with disability living in Cambridge and North Dumfries.

Disability is a complex topic and we encountered several challenges in the preparation of this report. Firstly, as shown in

the chart above, estimates of prevalence range widely across various major Canadian surveys. The reasons for this variability include differences in the definition of disability and differing research methods. An additional challenge lay in the fact that the sampling methodology used in post-censal surveys such as PALS allows for sufficient sample to give estimates by province, but not necessarily for smaller geographic areas. Census data on the other hand is readily available and can be retrieved at several geographic levels. As a result, much of the information included in this profile is based on 2006 census data provided through Statistics Canada and the Community Data Consortium, a project of the Canadian Council on Social Development.

### Inside this issue:

Prevalence of Disability by Age and Gender 2

Type of Disabilities Among Children with Disabilities 2

Prevalence of Disabilities in Adults by Type 2

Educational Attainment 3

Labour Force Participation Rate 3

Unemployment Rate by Gender 3

Population 15+ Working Full-Year Full-Time 4

Average Total Income by Gender 4

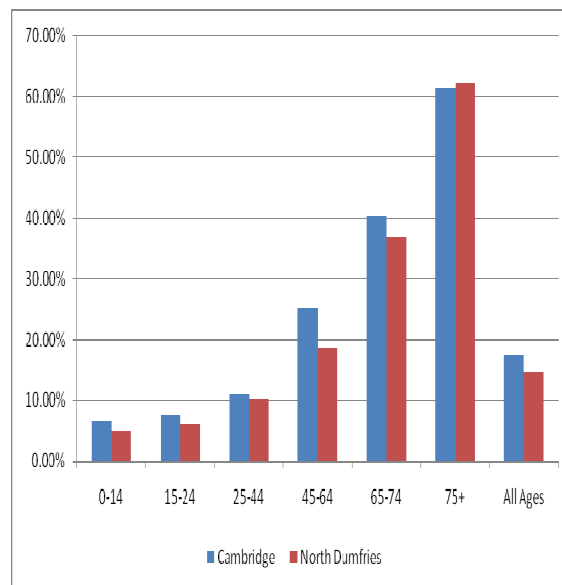
Prevalence of Low Income After Tax 4

## Population with a Disability by Age Group

At the time of the 2006 Census the total population of the city of Cambridge including children, adults, and seniors was 120,370. Of this total 21,145 people, or 17.6%, had disabilities. The total population of the township of North Dumfries was 9,055 and 1330 people, or 14.7%, had disabilities.

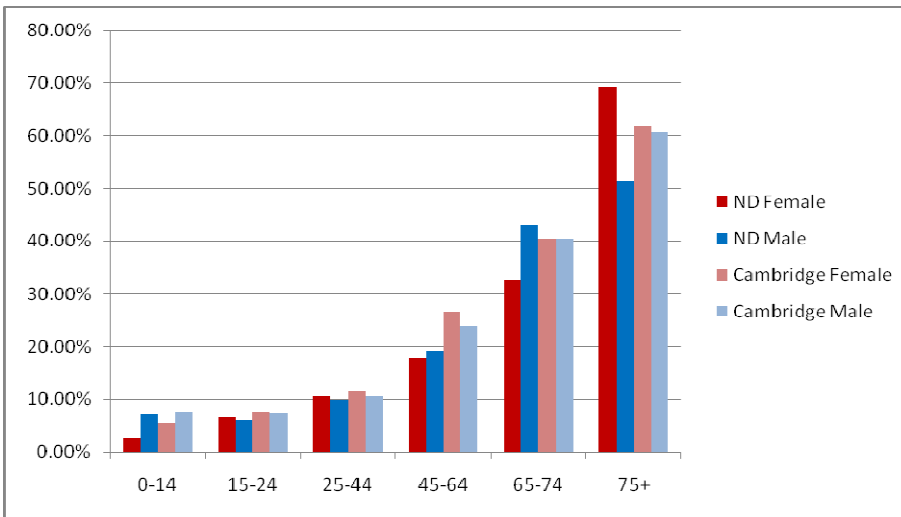
As shown in the chart to the right, the likelihood of experiencing disabilities increases as people age. More than half of all seniors in Cambridge and North Dumfries aged 75 or older reported having disabilities while fewer people in other age groups reported having disabilities.

The prevalence of disability was higher in Cambridge than in North Dumfries in all except the oldest age group.



Source: Statistics Canada, 2006 Census

## Prevalence of Disability by Age and Gender

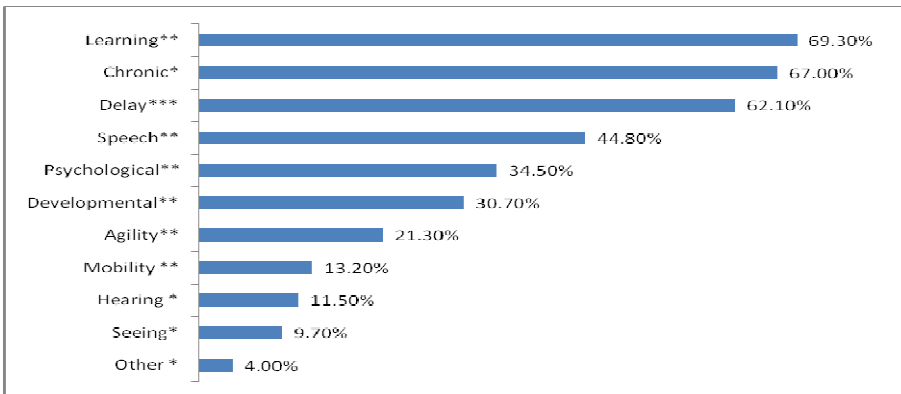


Source: Statistics Canada, 2006 Census

In Canada, as in many other countries, women report a higher rate of disability than men. Women with disabilities are recognized to be multiply disadvantaged - at risk of experiencing exclusion on account of their gender and also their disability (United Nations, 2006, Some Facts About Persons with Disabilities).

The chart to the left shows a local breakdown of disability by age and gender. In 2006 in both Cambridge and North Dumfries the prevalence of disability was higher females in several age categories. However, this does not hold true in all age groups. The very highest rate of disability was among older senior women living in North Dumfries.

## Type of Disabilities Among Children with Disabilities



Note: Categories marked \*apply to all children, categories marked \*\* apply to children ages 5-14; categories marked \*\*\* apply to children ages 0-4.

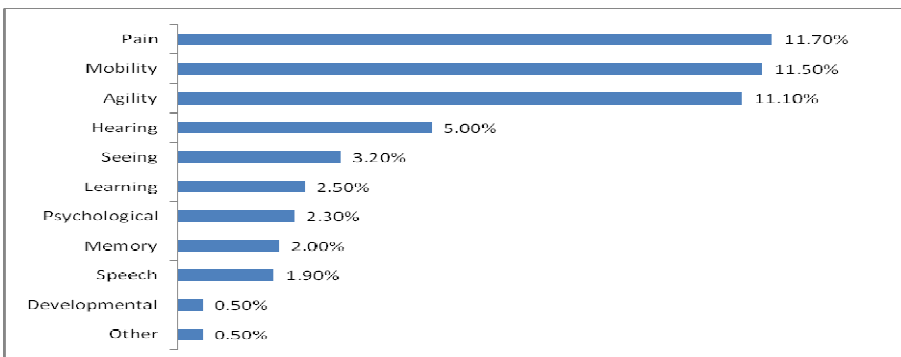
Source: Statistics Canada, Participation and Activity Limitation Survey 2006: Analytical Report

A breakdown of disabilities by type was unavailable at a local level; however, it was available at a national level through the 2006 Participation and Activity Limitation Survey.

As shown in the chart to the left, developmental delay was the most commonly reported disability in Canadian children aged 0-4. Learning disabilities were among the most often reported disabilities in children aged 5-14. Among children 0-14 the most widespread disability was related to a chronic health condition such as asthma.

The sum of all categories exceeds 100% since respondents were able to report more than one type of disability.

## Prevalence of Disabilities in Adults by Type



Source: Statistics Canada, Participation and Activity Limitation Survey 2006: Analytical Report

According to the 2006 Participation and Activity Limitation Survey, problems related to pain, mobility and agility were the most commonly reported disabilities among adults, affecting approximately 11% of the total population aged 15 years and older.

As was the case with children, disabilities often coexist—approximately 70% of the survey respondents who reported one of the top three disabilities were also affected by the other two.

## Educational Attainment

In 2006 a higher proportion of North Dumfries residents with disabilities had no certificate, diploma, or degree than North Dumfries residents as a whole or Cambridge residents with and without a disability.

In both communities people with disabilities had lower university completion rates.

On a positive note, in both communities more people with disabilities had completed apprenticeship or trades programs than their non-disabled counterparts.

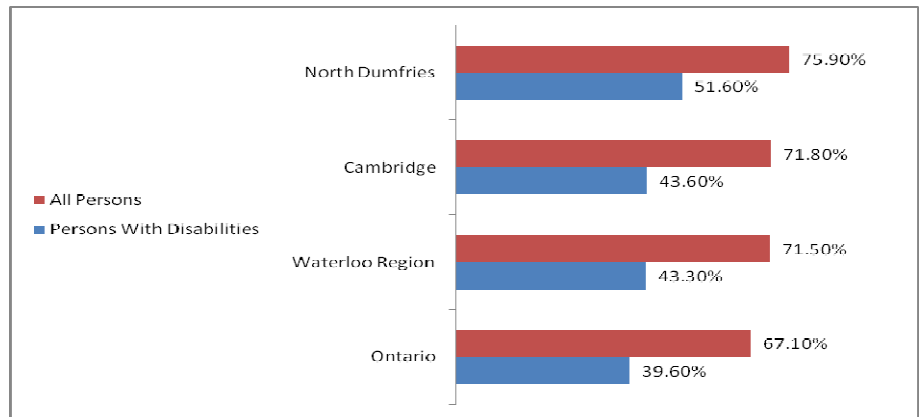
Level of Education	ND Disabled	ND All	Cambridge Disabled	Cambridge All
No Certificate, Diploma, Degree	33.5%	23.4%	24.6%	27.4%
High School Diploma	24.6%	25%	30.2%	29.6%
Apprenticeship or Trades	11.3%	10.1%	13.1%	8.6%
College or Other Non-University	16.5%	22.0%	20.1%	19.8%
University Certificate, Diploma or Degree	14.1%	19.5%	12.0%	14.6%

Source: Statistics Canada, 2006 Census

## Labour Force Participation Rate

Among the population aged 15 years and over, 51.6% of North Dumfries residents with disabilities and 43.6% of Cambridge residents with disabilities were active in the labour force. This was higher than both the provincial and regional rates for people with disabilities.

However, in all cases people with disabilities had a labour force participation rate that was much lower than that of the population as a whole.



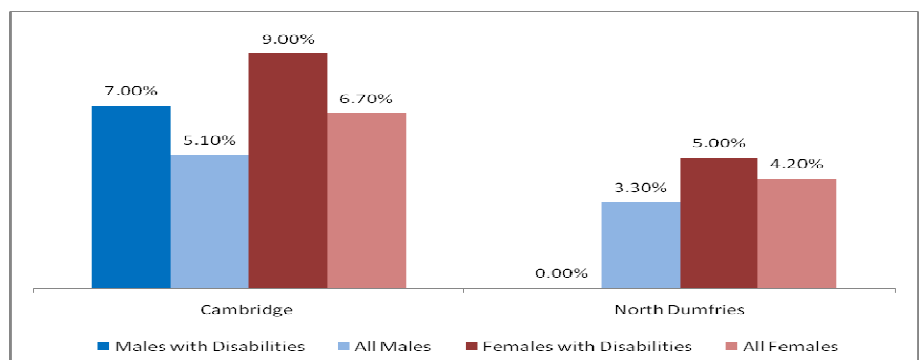
Source: Statistics Canada, 2006 Census

## Unemployment Rate by Gender

The unemployment rate for Cambridge residents with disabilities was higher than the unemployment rate for Cambridge residents as a whole.

In North Dumfries the unemployment rate for females with disabilities was higher, and the unemployment rate of males with disabilities was lower, than the population as a whole.

In both communities females with disabilities experienced the highest rates of unemployment.

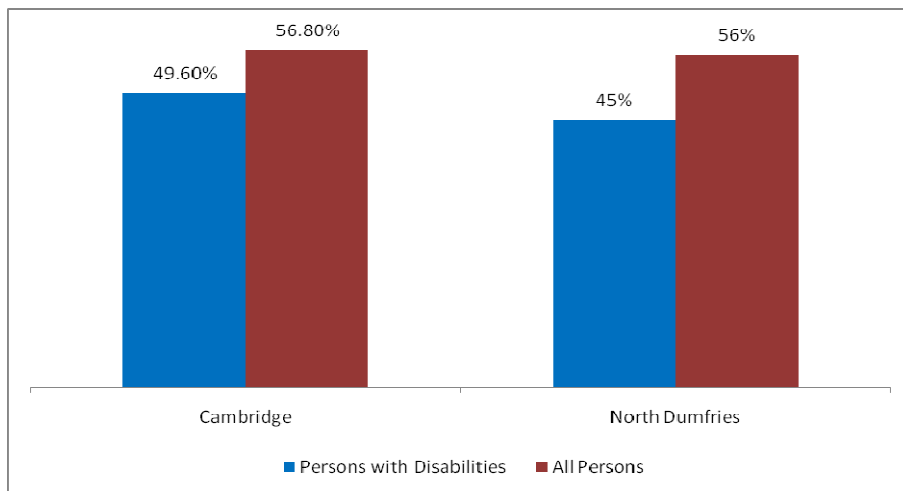


Source: Statistics Canada, 2006 Census

## Population 15+ Working Full-Year Full-Time

Even when employment is obtained, people with disabilities tend to work fewer hours than people without disabilities. As shown in the chart to the right, in both Cambridge and North Dumfries people with disabilities were less likely to work full-year, full-time than the population as a whole.

Self employment is an attractive option for some people with disabilities. According to the 2006 Census, more disabled adults in Cambridge were self-employed (9.7%) than the population as a whole (8.4%). In North Dumfries the situation was reversed - in that community fewer disabled adults reported self-employment (10.2%) than the population as a whole (12.6%).



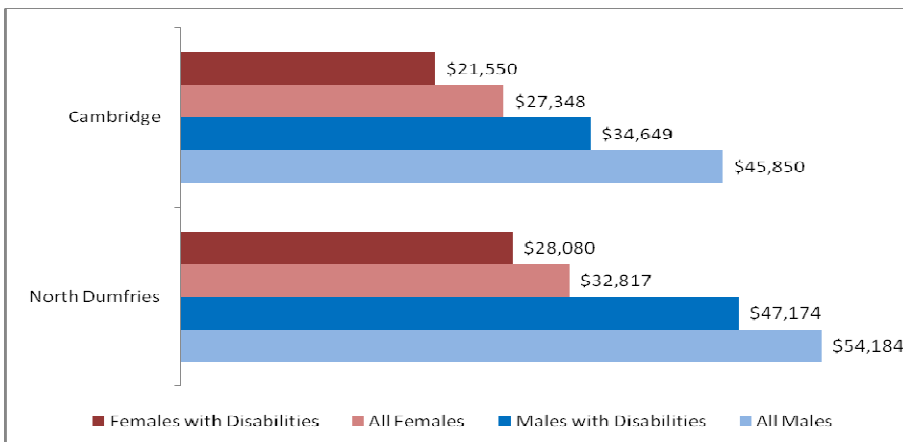
Source: Statistics Canada, 2006 Census

## Average Total Income by Gender

In 2005, the average total income for adults with disabilities in Cambridge was \$27,566 compared with \$36,436 for the population as a whole.

In North Dumfries the average total income for adults with disabilities was \$37,441 compared to \$43,506 for the population as a whole.

As shown in the chart to the right, in both communities the income of males, both with and without disabilities, was significantly higher than that of their female counterparts.



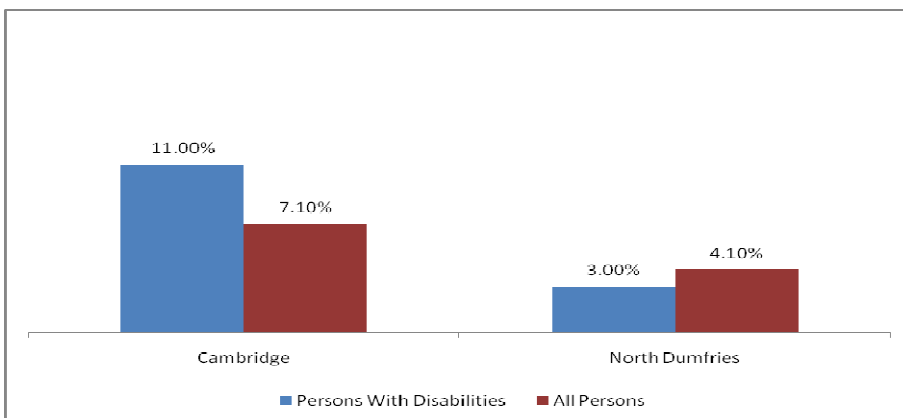
Source: Statistics Canada, 2006 Census

## Prevalence of Low Income After Tax

In 2005, 11% of Cambridge residents with disabilities were living below the Statistics Canada after-tax Low Income Cut-Off (LICO), compared to 7.1% of the population as a whole.

By definition, those living under LICO spend 20% or more than the average on food, shelter and clothing (which leaves less money available for other expenses such as health, education, transportation and recreation).

North Dumfries residents with disabilities fared a little better, with only 3% living below LICO compared to 4.1% of all residents.



Source: Statistics Canada, 2006 Census